

# SUDC and the



## What is SUDC?

Sudden Unexplained Death in Childhood (SUDC) is a category of death of a child 12 months of age or older that remains unexplained after a thorough case investigation, including the performance of a complete autopsy, examination of the death scene, and clinical history review. Most often, a seemingly healthy child goes to sleep and never wakes up. **At this time, we do not know what causes SUDC, how to predict it, or how to prevent it.** A medical examiner or coroner could rule a child's death SUDC when they complete a thorough evaluation and finds no other cause of death.

## SUDC Facts

SUDC is believed to be rare, occurring in about one in every 100,000 children. Every year in the United States, approximately 500 children are lost to SUDC (R96-R99). It is most common in young children and is the fifth leading category of death among children between the ages of 1 and 4. We do not know exactly how often SUDC occurs—in the U.S. or around the world. Because the World Health Organization (WHO) lacks a specific way to record sudden and unexplained deaths in children that have been thoroughly investigated, it is impossible to know how widespread the problem is.

**According to the Centers for Disease Control and Prevention (CDC), in 2023, SUDC (R96-R99) affected:**

- 247 children ages of 1-4 years;
- 44 children ages of 5-9 years;
- 37 children ages of 10-14 years; and
- 152 teens ages of 15-19 years.

*Overall, 61% were male. The majority of deaths (52%) were among 1-4 year olds*

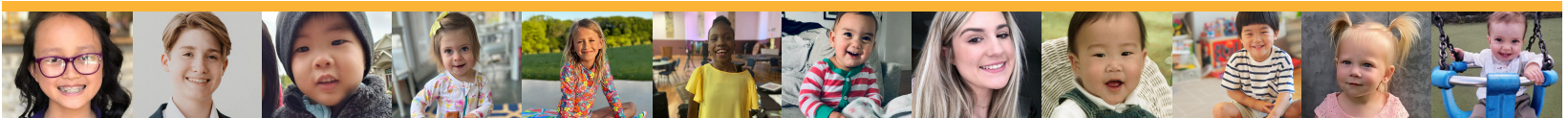
## The SUDC Foundation

The SUDC Foundation envisions a world where no more children are lost to Sudden Unexplained Death in Childhood. The SUDC Foundation is the only organization worldwide whose purpose is to raise awareness, fund research, and serve those affected by SUDC.

- ★ **Funds Research.** The SUDC Foundation provides grants that will further our understanding of the cause(s) and ways to prevent SUDC.
- ★ **Serves Families.** The SUDC Foundation currently serves over 2,000 families in 25 countries. It provides personalized, comprehensive care through our team of mental health professionals. We cultivate a compassionate community of support for bereaved families where no one grieves alone. The Foundation also helps families navigate the difficult and often confusing investigation into their child's death, serving as a liaison between families and the medical examiner or coroner. Additionally, we assist families in accessing research and genetic testing, providing opportunities for answers and a deeper understanding of what may have happened to their child.

- ★ **Raises Awareness and Advocates for the SUDC Community.** The Foundation raises awareness and supports legislative efforts to ensure comprehensive, standardized death investigations and extended bereavement leave. It also advocates for fair treatment, access to proper medical care for families, and improved data collection to improve our understanding of SUDC.
- ★ **Assists Medical Professionals.** The Foundation provides resources to help medical examiners and coroners, pediatricians and other doctors care for and communicate with families experiencing the sudden, unexpected and unexplained loss of a child.

***The SUDC Foundation provides all services at no cost to the people it serves.***



**To Learn More, Please Visit [SUDC.org](https://www.sudc.org) ★ 1-800-620-SUDC ★ [info@sudc.org](mailto:info@sudc.org)**